

General Information on the **HMI** HOYME
PFS Series - Positive Flow Switch
The Hoyme Positive Flow Switch is an inline duct switch.

The Switch itself is mounted on the outside of the duct and is activated on positive air flow and is not affected by pressure or "build-up" in the duct.

The PFS - Positive Flow Switch is available in 24Vac and 120Vac Models.

The PFS - Positive Flow Switch can also be mounted Vertically "Up" or Horizontally.

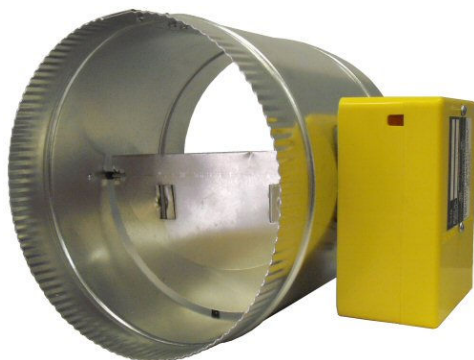
The sizes of this switch range from 4" - 9" in diameter in increments of 1".

The I.D. for the Positive Flow Switch is:

24Vac
PFS-0x00-024 where "x" = Diameter of Switch in inches.
(Pictured Below)



120Vac
PFS-0x00-120 where "x" = Diameter of Switch in inches.
(Pictured Below)



Please refer to our Web page www.hoyme.com for more information
and a complete list of all our products.