

HMI Hoyme Manufacturing Inc. **Special Note: Circuits are colored for clarification only and are not necessarily those found in actual installations. Combustion Air Damper Wires, however, are colored as shown.**

DIAGRAM #1B

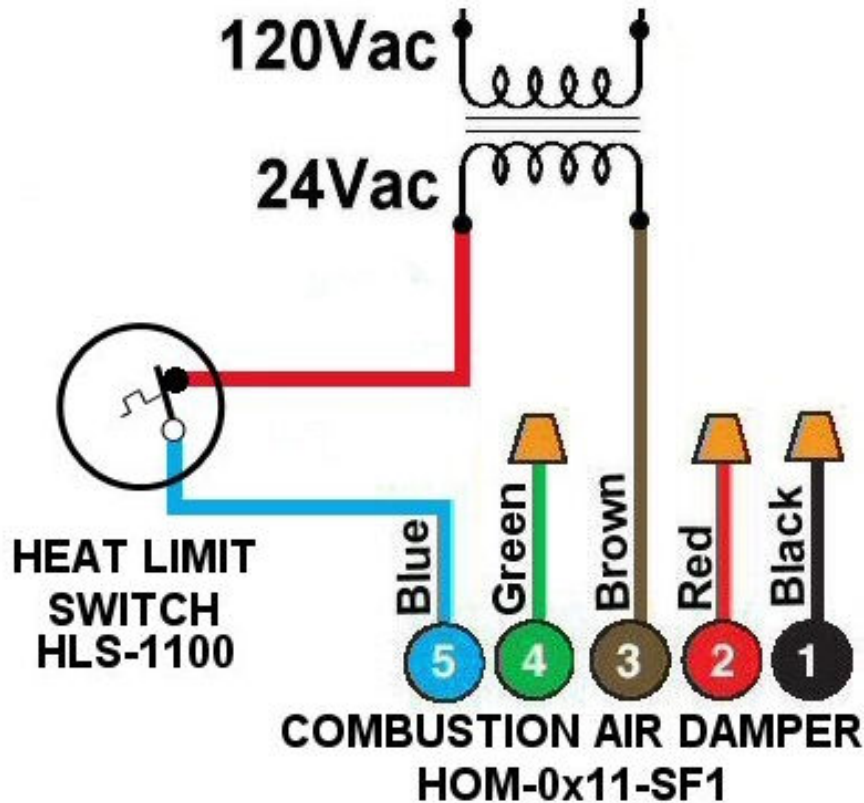


Diagram #1B: A Domestic Hot Water tank using a **combustion air supply duct**.

ADDED:

1. **Combustion Air Damper (HOM-0x11-SF1)** for a Domestic Hot Water Tank.
2. **Heat Limit Switch (HLS-1100)** that opens on temperature rise.

OPERATION: **Combustion Air Damper** connected in series to a continuous 24Vac power supply and a Heat Limit Switch. Heat limit switch attached to Hot water tank flue stack. Combustion air damper opens with the sensing of a temperature rise of 130°F and closes when cooled down to 125°F.

Additional Colored wiring diagrams are shown on the web at www.hoyme.com